



# The Art of **Flow Restoration**

**Ikazuchi Zero™**  
Semi-Compliant PTCA Balloon

OVERVIEW

CROSSABILITY

LOW PROFILE

CASE STUDY

CODES

**Ikazuchi Zero™**  
Semi-Compliant PTCA Balloon

For Both Everyday and  
Complex CTO Cases\*

- Manufactured by Kaneka Corporation, one of Japan's leading providers of interventional devices.
- Now part of the PTCA balloon portfolio of Cordis, a Cardinal Health Company.

**High Quality Japanese Balloon Design**

- Engineered for smaller and narrower lesions.
- Engineered to treat CTO and challenging lesions.

\*CTO = Chronic Total Occlusion. Challenging lesions such as calcified or tortuous lesions may not be crossed with this catheter. The physician in charge of the procedure should determine whether this catheter is applicable based on his/her past experiences.

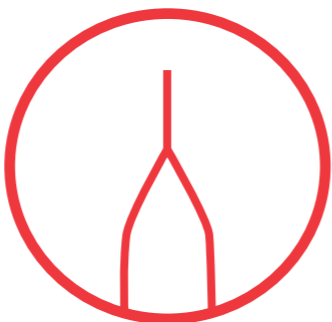


## Advancing Crossability Performance



### Next-Generation TR2 Hydrophilic Coating

Improves lubricity, thereby reducing resistance.



### Tapered Balloon Shape

Features a long, smooth tip, and a low profile engineered to prevent buckling and facilitate crossing.



### Unique Tri-fold Wrapping Technology

Optimized balloon-wrapping technology.



### Lowest-Profile 1 mm Diameter Pre-Dilatation Balloon Available\*

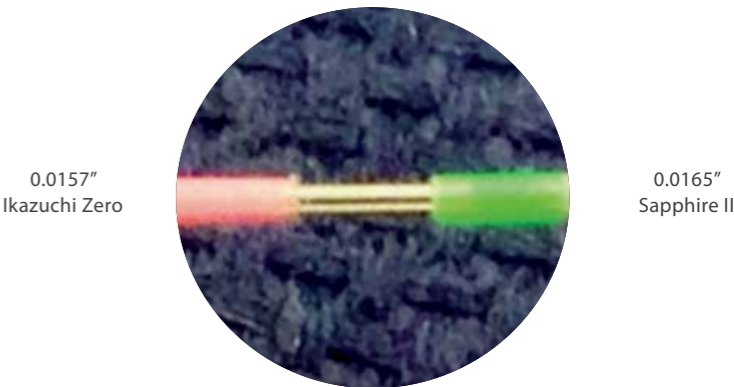
Cross confidently with the lowest profile currently available (0.0157").



## Featuring the Lowest Available Profile\*

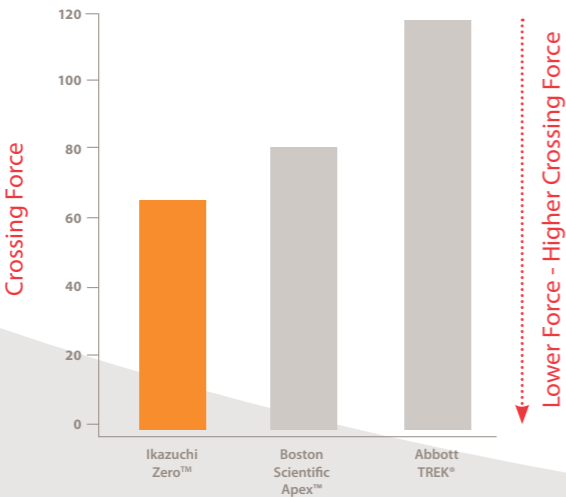
- Engineered to facilitate crossing, including complex lesions.\*\*
- Minimized entry and balloon profiles with optimized pushability and tip flexibility.

### Ikazuchi vs Sapphire II



## Lowest Crossing Profile\*

### Crossability of 3.0mm Pre-Dilatation Products\*\*\*



Kaneka Ikazuchi Zero 1.0mm	OrbusNeich Sapphire™ II 1.0mm	Abbott MINI TREK® 1.2mm	Medtronic Sprinter® Legend 1.25mm	Terumo Tazuna® 1.25mm	Boston Scientific Emerge™ 1.2mm
0.585mm (0.023 in)	0.59mm (0.0232 in)	0.66mm (0.0259 in)	0.66mm (0.0259 in)	0.66mm (0.0259 in)	0.67mm (0.0263 in)

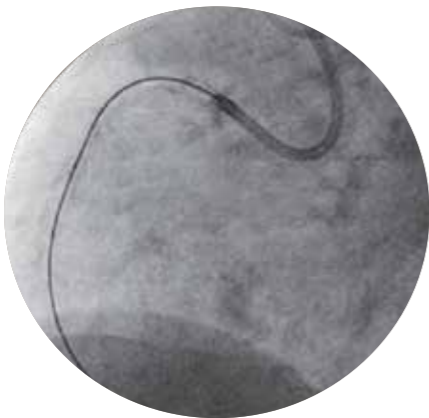
\*Source: Data on file at Kaneka, compared to 1.2mm Abbott Mini Trek, 1.2mm Boston Scientific Emerge, 1.25mm Medtronic Sprinter Legend, 1.25mm Terumo Tazuna, 1.25mm Orbus Neich Sapphire II.  
\*\*Challenging lesions such as calcified or tortuous lesions may not be crossed with this catheter. The physician in charge of the procedure should determine whether this catheter is applicable based on his/her past experiences.  
\*\*\*Cordis data on file, 3.0mm products.

\*Source: Kaneka data on file.  
\*\*Challenging lesions such as calcified or tortuous lesions may not be crossed with this catheter. The physician in charge of the procedure should determine whether this catheter is applicable based on his/her past experiences.

Confidently Navigate Torturous Anatomy

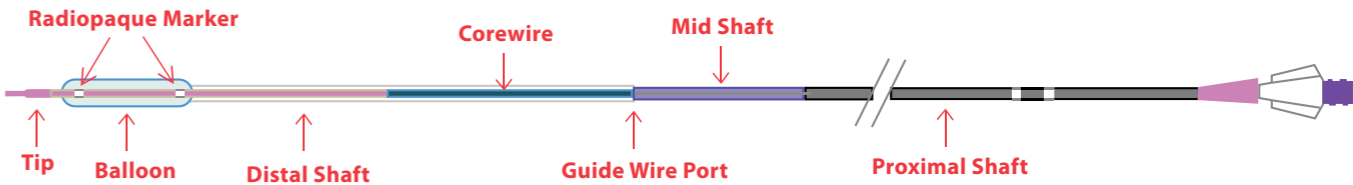


Chronic Total Occlusion Lesion of the RCA Successfully Crossed with a 1.0mm Ikazuchi Zero\*



Facilitates treating various lesions, including bifurcations, CTOs, or those that require higher crossability.

The Lowest Profile in the Market



Key Specifications	
Entry Profile:	0.40mm~0.43mm
RX Lumen Length:	25cm (ø1~1.5mm, 3.0mm~4.0mm) 27cm (ø2 ~ 2.75mm)
Effective Length:	146cm
Radiopaque Markers:	1 (ø1 ~ 1.5mm) 2 (ø1.75 ~ 4mm)
Balloon Folds:	2-fold (ø1 ~ 1.5mm) 3-fold (ø2 ~ 4mm)
Compatible GW Size:	0.014"
Distal Shaft OD:	2.3 F (ø1.2 ~ 2.75mm) 2.5 F (ø1mm, 3mm ~ 4.0mm)
Accessories:	Flushing Needle and Rewrap Tool Included
Sizes Available:	ø1.00 ~ 4.00mm diameters* 6 ~ 30mm lengths
Platform:	Rapid Exchange

\* Please contact your Cordis Sales Representative for the full breadth of sizes and combinations (length/diameter) available.

Ikazuchi Zero™  
Semi-Compliant PTCA Balloon

For healthcare professionals only. © 2017 Cardinal Health. All Rights Reserved. Prior to use, refer to the Instructions for Use supplied with this device for indications, contraindications, side effects, suggested procedure, warnings, and precautions. Third party trademarks are the trademarks of respective owners. Not available for sale in the United States and certain other countries.

Ikazuchi Zero is a trademark of Kaneka Corporation, the legal manufacturer of Ikazuchi Zero and distributed by Cordis Corporation. CORDIS and the Cordis LOGO are trademarks of Cardinal Health and may be registered in the US and/or in other countries. All other marks are the property of their respective owners. EU2072-1 9/17.

WARNINGS: STERILE product, for one-time use only. Re-sterilizing or re-using may compromise the structural integrity of the device and may create a risk of contamination which, in turn, may result in health risks to patients. The inflated diameter of the balloon should correspond to the diameter of the vessel for treatment.

PTCA = Percutaneous Transluminal Coronary Angioplasty, NP = Nominal Pressure, RBP = Rated Burst Pressure  
PCI = Percutaneous Coronary Intervention, CTO = Chronic Total Occlusion

\*Challenging lesions such as calcified or tortuous lesions may not be crossed with this catheter. The physician in charge of the procedure should determine whether this catheter is applicable based on his/her past experiences.

Balloon Diameter (mm)	Balloon Length (mm)	Sheath (F)	Nominal Pressure (atm)	Rated Burst Pressure (atm)	Reference Number
1.00	6	5	6	14	ZE-6-100P
1.00	8	5	6	14	ZE-8-100P
1.20	6	5	6	14	ZE-6-120
1.20	8	5	6	14	ZE-8-120
1.50	10	5	6	14	ZE-10-150
1.50	12	5	6	14	ZE-12-150
1.50	15	5	6	14	ZE-15-150
1.50	20	5	6	14	ZE-20-150
2.00	6	5	6	14	ZE-6-200
2.00	10	5	6	14	ZE-10-200
2.00	12	5	6	14	ZE-12-200
2.00	15	5	6	14	ZE-15-200
2.00	20	5	6	14	ZE-20-200
2.00	30	5	6	14	ZE-30-200
2.25	10	5	6	14	ZE-10-225
2.25	12	5	6	14	ZE-12-225
2.25	15	5	6	14	ZE-15-225
2.25	20	5	6	14	ZE-20-225
2.50	6	5	6	14	ZE-6-250
2.50	10	5	6	14	ZE-10-250
2.50	12	5	6	14	ZE-12-250
2.50	15	5	6	14	ZE-15-250
2.50	20	5	6	14	ZE-20-250
2.50	30	5	6	14	ZE-30-250
2.75	10	5	6	14	ZE-10-275
2.75	12	5	6	14	ZE-12-275
2.75	15	5	6	14	ZE-15-275
2.75	20	5	6	14	ZE-20-275
3.00	10	5	6	14	ZE-10-300
3.00	12	5	6	14	ZE-12-300
3.00	15	5	6	14	ZE-15-300
3.00	20	5	6	14	ZE-20-300
3.00	30	5	6	14	ZE-30-300
3.25	15	5	6	14	ZE-15-325
3.25	20	5	6	14	ZE-20-325
3.50	10	5	6	14	ZE-10-350
3.50	12	5	6	14	ZE-12-350
3.50	15	5	6	14	ZE-15-350
3.50	20	5	6	14	ZE-20-350
3.50	30	5	6	14	ZE-30-350
3.75	15	5	6	14	ZE-15-375
3.75	20	5	6	14	ZE-20-375
4.00	10	5	6	14	ZE-10-400
4.00	12	5	6	14	ZE-12-400
4.00	15	5	6	14	ZE-15-400
4.00	20	5	6	14	ZE-20-400